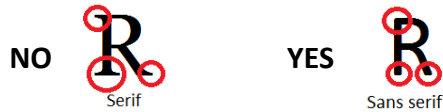


# Slide Design Tips

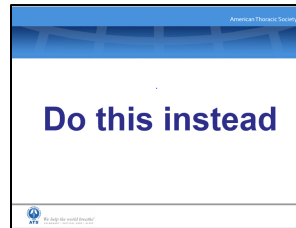
## Fonts and Text

- Avoid shadow/reflection/glow, ALL CAPITALS, and *italics*; use **bolding**, **color**, or underlining for emphasis
- Use figures rather than text when possible
- Minimize text per slide; don't make spoken words compete with written words
- Bullet points only, 6 or fewer/slide, 1 line/bullet (avoid word-wrapping)
- Use consistent sans serif font (Arial, Calibri, Helvetica)
- Use consistent punctuation and Capitalization
- 24 point font or larger



## Colors and Backgrounds

- Use light text on dark background or vice versa
- Avoid red or green for emphasis (due to colorblindness)
- Use the same, simple, monochromatic background throughout



## Figures and Tables

- Don't cut and paste published tables; data are unreadable and mostly irrelevant
- Don't use a figure that needs an apology ("Sorry you can't read this, but...")
- Make your own table/figure of just the data you want to discuss

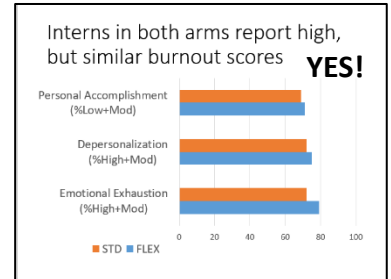
**NO**

Survey Item	IMC Program	Standard Program	Date Taken (MM/YY)
<b>Identification with training environment</b>			
Curiosity of operations	0	25	0
Team	0	25	0
Respect	0	25	0
Ability of interns to manage the patients they select	0	25	0
Mean	1	27	0.09 (p=0.372)
Residence	1	26	0.02 (p=0.228)
Time for interns to collect	25	57	0.26 (p=0.646)
<b>Effectiveness in performing clinical duties</b>			
Team	0	19	0.22 (p=0.232)
Residence	0	1	0.00 (p=0.963)
<b>Ability of learning step down to provide and time back</b>			
Team	1	69	0.02 (p=0.412)
Residence	1	49	0.00 (p=0.946)
Frequency of handoffs	0	67	0.00 (p=0.918)
Quality of handoffs	10	40	0.22 (p=0.642)
Ability of residents to work in interprofessional teams	1	1	0.04 (p=0.751)
<b>Identification with workflow</b>			
Type of staff provider	20	40	0.02 (p=0.428)
Team	10	10	0.22 (p=0.106)
Residence	0	20	0.22 (p=0.646)
Team	0	20	0.04 (p=0.751)
Program director	20	40	0.04 (p=0.751)

Interns in both arms report high, but similar burnout scores **YES**

Interns	Outcome	FLEX	STD	P
Emotional Exhaustion	% High+Mod	78.9%	72.3%	NS
Depersonalization	% High+Mod	75.3%	72.1%	NS
Personal Accomplishment	% Low + Mod	71.0%	68.6%	NS

EM < IM < Surgery;  
EE/DP higher than general population and many other professions  
Results similar when all trainees included and when adjusted for baseline results



- Don't overcrowd figure/graphic slides
- Omit published captions/figure legends (create your own)
- Use one graph or figure per slide, unless you need a side-by-side comparison
- Keep references small and in a consistent place on all slides (bottom corners preferable)

